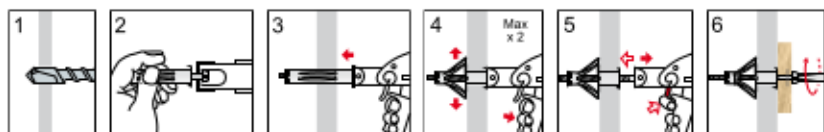


TMC

Metal anchor for plasterboard

Cheville métallique pour plaque de plâtre



White zinc plated

Zingué blanc



With screw Avec vis Code	Plug only Sans vis Code	Hole Trou Ø	Plug length Long. cheville Ø x L	Screw Vis Ø x L	Wall thickness Épais. paroi min-max	Pkg.	Outerbox* Cond.*
75001004038	75002008032▲	8	8x33	M4x41	4-9	100	2000
75001004045	75002008038▲	8	8x39	M4x47	9-16	100	2000
75001005045	75002011037▲	10	10x37	M5x43	5-13	50	1000
75001005058		10	10x53	M5x60	5-18	50	1000
75001005071		10	10x65	M5x74	18-32	50	1000
75001006045		12	12x37	M6x45	5-12	50	1000
75001006058		12	12x53	M6x60	5-18	50	1000
75001006071		12	12x66	M6x74	18-32	50	1000

* Only for codes 75001 / Uniquement pour les codes 75001



TMC setting tool

Pince pour cheville TMC

Code	Pkg.
49901000000	1

